

# Clayton Mill Run

## An Affordable Rental Community

701 S. New Road  
Absecon, NJ 08201  
Ocean County



## Affordable Housing Available for Sandy-Impacted Residents!

Priority for residency will be given to qualified residents that were displaced by and/or experienced major or severe damage from Superstorm Sandy until 90 days after construction completion.

Anticipated Completion date: Project Complete

### Community Features

- Community Room
- Smart Card Laundry Facilities
- Fitness Center
- Controlled Building Access
- On-site Management
- 24-hour Emergency Maintenance

### Unit Amenities

- Fully-equipped Kitchen
- Patio/Balcony
- Upgraded Laminate Floors
- Self-controlled Heat & Air

### Rents

One bedroom units/residences between **\$539-635\***

Two bedroom units/residences from **\$644-759\***

Three bedroom units/residences from **\$738-870\***

*\*Income restrictions apply.*

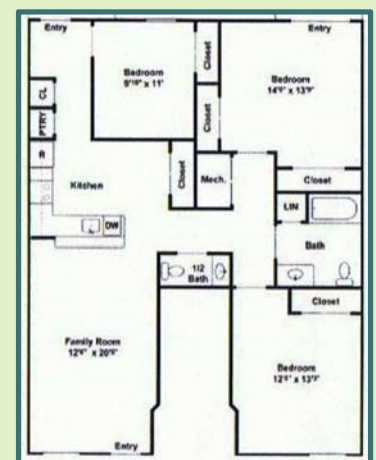
### How to Apply

707 White Horse Pike Unit A  
Absecon, NJ 08201  
609-385-2745  
claytonmillrun@coniferllc.com

### 2 Bedroom



### 3 Bedroom



**Now accepting applications!**

español 中文: 繁體版

Việt-ngữ 한국어 Tagalog

português العربية Kreyòl ગુજરાતી

italiano język polski

www.renewjerseystronger.org

